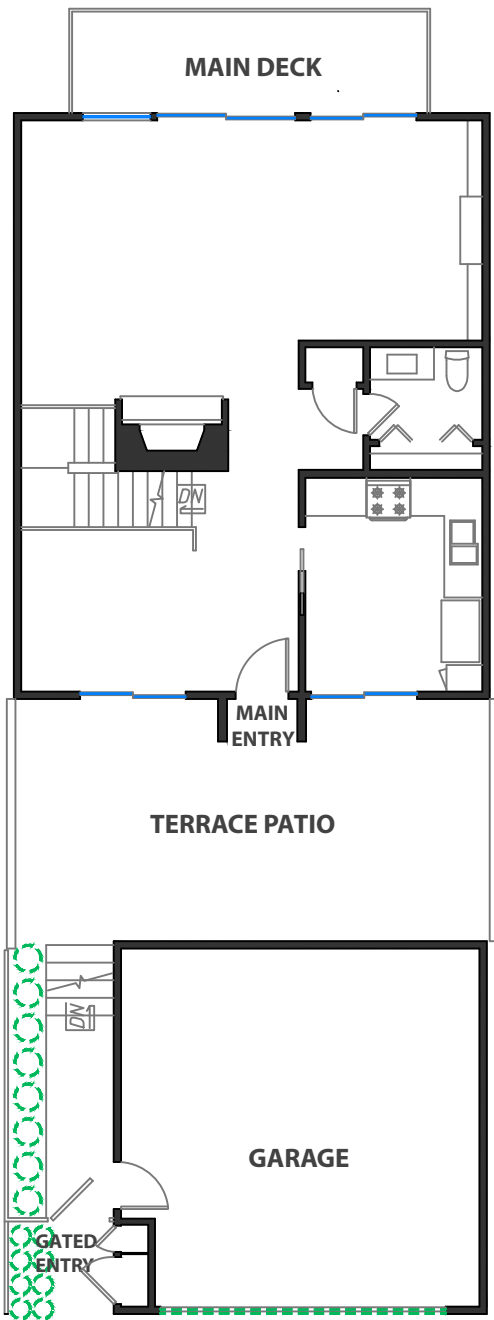
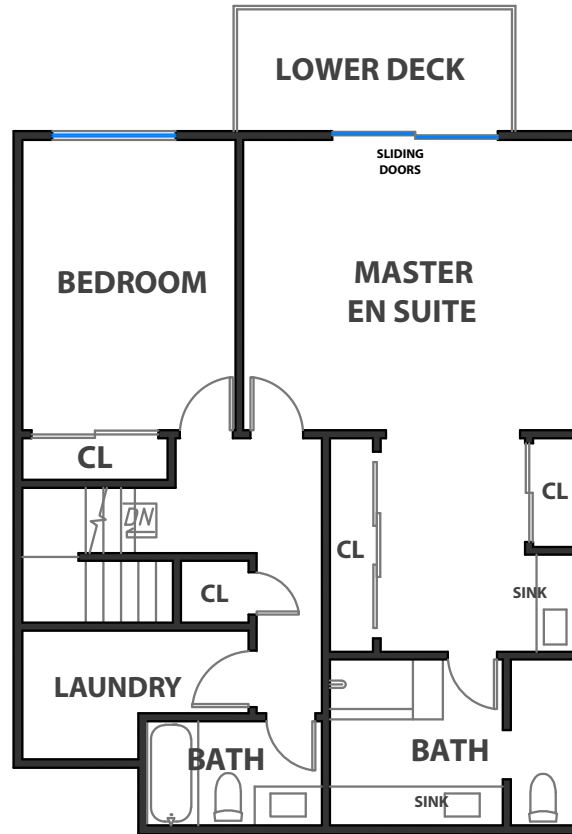


12 MARLIN COVE

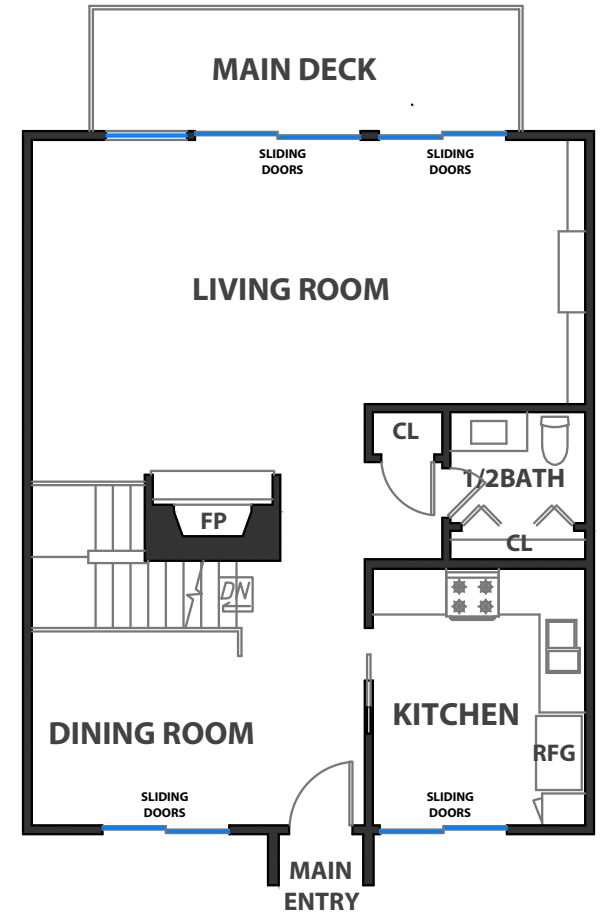
OAKLAND, CALIFORNIA



VIEW w/ SITE PLAN



LOWER LEVEL



MAIN LEVEL

PROPERTY SQF INFORMATION

LIVING SPACE		NON-LIVING SPACE	
Square Footage:	1777 Sq Ft*	Square Footage:	1009 Sq Ft*
* Main Level	898	* Terrace Patio	370
* Lower Level	879	* Garage	448
		* Main Deck	116
		* Lower Deck	75

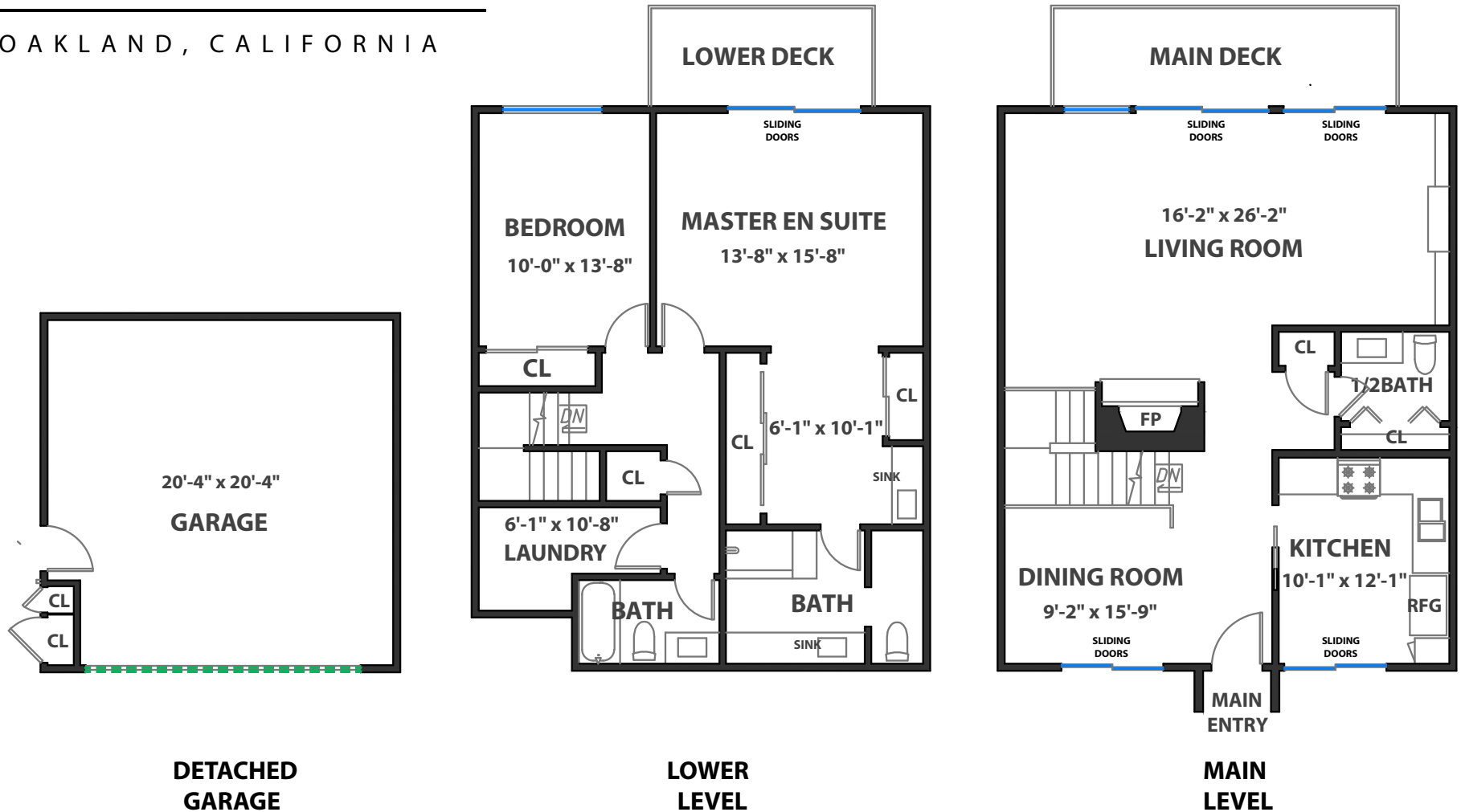
APPROXIMATE TOTAL LIVING & NON-LIVING SPACE

Square Footage: 2786 Sq Ft*

RENDERING BY OPEN HOMES PHOTOGRAPHY
 ALL MEASUREMENTS ARE APPROXIMATE AND MAY NOT BE EXACT. DO NOT RELY ON THE ACCURACY OF THIS FLOOR PLAN WHEN DETERMINING THE PRICE OF A PROPERTY OR MAKING DECISIONS REGARDING BUYING OR SELLING OF PROPERTIES WITHOUT INDEPENDENT VERIFICATION.

12 MARLIN COVE

OAKLAND, CALIFORNIA



PROPERTY SQF INFORMATION

LIVING SPACE		NON-LIVING SPACE	
Square Footage:	1777 Sq Ft*	Square Footage:	1009 Sq Ft*
* Main Level	898	* Terrace Patio	370
* Lower Level	879	* Garage	448
		* Main Deck	116
		* Lower Deck	75

APPROXIMATE TOTAL LIVING & NON-LIVING SPACE

Square Footage: 2786 Sq Ft*